



**\*\* CLOSEOUT EQUIPMENT SALE \*\***

**\*\* SET-IN-PLACE DELIVERY AVAILABLE \$95.00 / UNIT - NEW EQUIPMENT FULL MFG. WARRANTY - USED EQUIPMENT NO WARRANTY AVAILABLE - 14 DAY RETURN POLICY ONLY FOR DEFECTIVE UNITS \*\***

09/09/2024

**CUBE TRUCK, MOBILE  
FUSO  
Model FE125 (#960163)**

**\$7,500.00 ea**

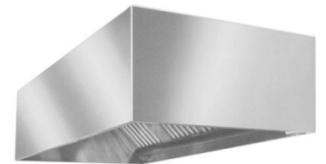
**\*\*USED\*\*** 2012 Mitsubishi Fuso Canter FE125 Box Truck, 3.0 Liter Turbo Diesel, DOHC 16-Valve 4 cylinder, 6-Speed automatic transmission, 16' Morgan box, 72" x 36" 2,000 lb. capacity rear lift-gate, aprox. 232,127 miles **\*\*SOLD AS-IS\*\***



**EXHAUST HOOD  
Halton  
Model (#960142)**

**\$1,950.00 ea**

**\*\*USED\*\*** Exhaust Hood Canopy, 96"W x 48"D x 24"H, wall type, Type 1 - grease removal, aluminum filters, NSF



**WALK IN COOLER, MODULAR, SELF-CONTAINED  
Norlake  
Model KLB46-C (#960090)**

**\$2,500.00 ea**

**\*\*USED\*\*** Norlake Walk-In Cooler, Indoor, 72" x 42" x 6'-7" H, with floor, 26 gauge embossed coated steel interior & exterior finish, self-closing door hinged on right, locking deadbolt handle, self-contained top-mount refrigeration system



**CONVEYOR OVEN, GAS  
Lincoln Impinger  
Model 1450-000-U (#960166)**

**\$6,500.00 ea**

**\*\*USED\*\*** Lincoln Impinger® I Conveyor Pizza Oven, Natural Gas, single-deck, single conveyor belt, solid door, glass access window included, 220v/60/1, 120,000 BTU, CE, UL, UL EPH Classified, CSA Star, CSA Flame



**REACH-IN REFRIGERATOR  
True Mfg. - General Foodservice  
Model T-19-HC (#960109)**

**\$1,695.00 ea**

**\*\*USED\*\*** Refrigerator, reach-in, one-section, (1) solid door, (3) adjustable PVC coated shelves, interior lighting, stainless steel door, stainless steel front, aluminum sides, aluminum interior with stainless steel floor, 2-1/2" castors, R290 Hydrocarbon refrigerant, 1/10 HP, 115v/60/1-ph, 1.5 amps, NEMA 5-15P, cULus, UL EPH Classified, Made in USA



**REACH-IN REFRIGERATOR  
True Mfg. - General Foodservice  
Model T-23-HC (#960054)**

**\$1,895.00 ea**

**\*\*USED\*\*** Refrigerator, reach-in, one-section, (1) solid door, (3) PVC coated adjustable wire shelves, interior lighting, stainless steel door, stainless steel front, aluminum sides, clear coated aluminum interior with stainless steel floor, 4" castors, 115v/60/1-ph, NEMA 5-15P, cULus, UL EPH Classified, CE, Made in USA, ENERGY STAR® \*\*2EA AVAILABLE\*\*



**REACH-IN REFRIGERATOR****Atosa USA****Model MBF8505GR (#960066)****\$1,200.00 ea**

**\*\*USED\*\*** Atosa Refrigerator, reach-in, one-section, 27"W x 31-7/10"D x 83-1/10"H, bottom-mount self-contained refrigeration, 19.1 cu. ft., (1) locking right hinged solid door, digital temperature control, 33° to 40°F temperature range, (3) adjustable shelves, interior LED lighting, automatic evaporation, air defrost, stainless steel interior & exterior, galvanized steel back, 4" casters, R290 Hydrocarbon refrigerant, 1/7 HP, 115v/60/1-ph, 2.1 amps, cord with NEMA 5-15P, cETLus, ETL-Sanitation, ENERGY STAR®

**REACH-IN REFRIGERATOR****Kelvinator Commercial****Model KCBM23R (#960110)****\$1,595.00 ea**

**\*\*USED\*\*** Reach-In Refrigerator, one-section, self-contained bottom mount refrigeration, 23 cubic feet capacity, stainless steel door with lock, +33/+41°F temperature range, LED light, (3) vinyl coated steel shelves, 304 stainless steel interior, galvanized & stainless steel exterior, heavy duty casters, 115v/60/1-ph, NEMA 5-15P, cETLus, NSF/ETL-Sanitation

**REACH-IN REFRIGERATOR****Turbo Air****Model M3R24-1-N (#904614)****\$1,795.00 ea**

**\*\*USED\*\***M3 Refrigerator, reach-in, one-section, 21.6 cu. ft. capacity, 28-3/4"W x 30-3/4"D x 78"H, top mount self-contained refrigeration with self-cleaning condenser, (1) field reversible hinged solid door with lock, exterior LED digital temperature controller, self-diagnostic monitoring system, automatic fan motor delays, LED interior lighting, (3) PE coated wire shelves, aluminum interior with stainless steel floor, stainless steel front & sides (galvanized steel top, bottom & back), R290 Hydrocarbon refrigerant, 1/4+ HP, 115v/60/1-ph, 2.5 amps, cord with NEMA 5-15P, ETL-Sanitation, cETLus, ENERGY STAR® \*\*2EA AVAILABLE\*\*

**REACH-IN FREEZER****Turbo Air****Model M3F24-1-N (#960165)****\$2,095.00 ea**

**\*\*USED\*\*** M3 Freezer, reach-in, one-section, 21.6 cu. ft. capacity, 28-3/4"W x 30-3/4"D x 78"H, top mount self-contained refrigeration with self-cleaning condenser, (1) field reversible hinged solid door with lock, exterior LED digital thermometer, door open beep, self-diagnostic monitoring system, smart fuzzy defrost, automatic fan motor delays, LED interior lighting, (3) PE coated wire shelves, aluminum interior with stainless steel floor, stainless steel front & sides (galvanized steel top, bottom & back), R290 Hydrocarbon refrigerant, 3/8 HP, 115v/60/1-ph, 4.4 amps, cord with NEMA 5-15P, ETL-Sanitation, cETLus, ENERGY STAR®

**REACH-IN FREEZER****True Mfg. - General Foodservice****Model T-49F (#960096)****\$2,650.00 ea**

**\*\*USED\*\*** Freezer, reach-in, two-section, -10°F, (2) stainless steel doors, (6) PVC coated adjustable wire shelves, interior lighting, stainless steel front, aluminum sides, aluminum interior with stainless steel floor, 4" castors, 1 HP, 115v/60/1-ph, 9.6 amps, NEMA 5-15P, Made in USA, cULus, NSF / UL EPH Classified

**REACH-IN FREEZER****Atosa USA****Model MBF8002GR (#960116)****\$2,250.00 ea**

**\*\*USED\*\*** Atosa Freezer, reach-in, two-section, 51-7/10"W x 31-7/10"D x 81-3/10"H, top mount self-contained refrigeration, 43.2 cu ft., (2) locking hinged solid doors, digital temperature control, -8° to 0°F temperature range, (6) adjustable shelves, interior LED lighting, automatic evaporation, electric defrost, stainless steel interior & exterior, galvanized steel back, 4" casters, R290 Hydrocarbon refrigerant, 3/4 HP, 115v/60/1-ph, 8.6 amps, cord with NEMA 5-15P, cETLus, ETL-Sanitation, ENERGY STAR®

**REACH-IN UNDERCOUNTER FREEZER****Atosa USA****Model MGF8405GRL (#903804)****\$1,595.00 ea**

**\*\*NEW\*\*** Atosa Undercounter Freezer, reach-in, one-section, 27-1/2"W x 30"D x 34-1/10"H, rear-mounted self-contained refrigeration, 7.15 cu. ft., (1) left hinged solid door, digital temperature control, -8° to 0°F temperature range, (1) adjustable shelf, automatic evaporation, electric defrost, stainless steel interior & exterior, galvanized steel back, 2" casters, R290 Hydrocarbon refrigerant, 1/5 HP, 115v/60/1-ph, 1.8 amps, cord, NEMA 5-15P, cETLus, ETL-Sanitation \*\*2EA AVAILABLE\*\*

**REACH-IN UNDERCOUNTER FREEZER****Norpole, Inc.****Model NP2F-48UC (#960157)****\$1,400.00 ea**

**\*\*USED\*\*** Under Counter Freezer, two-section, 12 cu. ft., (2) solid doors, programmable electronic control system, (2) PVC coated adjustable shelves, heavy-duty castor wheels, stainless steel exterior & interior, self-contained refrigeration, rear mounted compressor, 1/4+ HP, 115v/60/1-ph, 4.5 amps, NEMA 5-15P, cETLus, ETL-Sanitation



**SANDWICH / SALAD PREPARATION REFRIGERATOR**

True Mfg. - General Foodservice  
Model TSSU-27-08-HC (#960117)

**\$1,350.00 ea**

**\*\*USED\*\*** Sandwich/Salad Unit, (8) 1/6 size (4"D) poly pans, stainless steel insulated cover, 11-3/4"D cutting board, (1) door, (2) PVC coated adjustable wire shelves, stainless steel top, front & sides, aluminum back, aluminum interior with stainless steel floor, w/ single stainless steel overs shelf attached, 1/5 HP, 115v/60/1-ph, 3.5 amps, NEMA 5-15P, cULus, UL EPH Classified, Made in USA

**REFRIGERATED WORK TOP**

True Mfg. - General Foodservice  
Model TWT-48D-4-HC (#960132)

**\$3,450.00 ea**

**\*\*USED\*\*** Work Top Refrigerator, two-section, rear mounted self-contained refrigeration, stainless steel top with rear splash, (4) drawers each, accommodates (1) 12" x 18" x 6" food storage box (not included), stainless steel front & sides, aluminum interior with stainless steel floor, 1/5 HP, 115v/60/1-ph, 3.0 amps, NEMA 5-15P, Made in USA

**REFRIGERATOR FREEZER, UNDERCOUNTER, REACH-IN**

Turbo Air  
Model JURF-48-N (#960167)

**\$2,250.00 ea**

**\*\*USED\*\*** J Series Side Mount Undercounter Dual Temp Refrigerator/Freezer, two-section, 47-1/4"W x 27-1/2"D x 28-3/4"H, 4.48 cu. ft. refrigerator, 4.96 cu. ft. freezer, front air intake, side mount self-contained compressor, (2) stainless steel doors with recessed handles, (2) PE coated wire shelves, LED interior lighting, hot gas condensate system, stainless steel exterior (galvanized steel back & bottom), aluminum interior & door liners with stainless steel floor, R290 Hydrocarbon refrigerant, 1/3 HP, 115v/60/1-ph, 2.5 amps, NEMA 5-15P, ETL-Sanitation, cETLus

**BACK BAR CABINET, REFRIGERATED**

Atosa USA  
Model MBB69GGR (#900610)

**\$3,065.00 ea**

**\*\*NEW\*\*** Atosa Back Bar Cooler, two-section, 68"W x 28-1/10"D x 40-1/10"H, self-contained side mount refrigeration, 21.5 cu. ft., (2) locking glass doors, digital temperature control, (4) epoxy coated shelves, stainless steel interior & exterior, 2" casters, R290 Hydrocarbon refrigerant, 1/7 HP, 115v/60/1-ph, 2.3 amps, cETLus, ETL-Sanitation

**BOTTLE COOLER**

True Mfg. - General Foodservice  
Model TD-50-18-HC (#960065)

**\$975.00 ea**

**\*\*USED\*\*** Bottle Cooler, flat top, (16.5cs) 12 oz. bottles or (24cs) 12 oz. can capacity, stainless steel counter top & (2) lids, barrel locks standard, well design, (3) PVC coated adjustable bin dividers, LED interior lighting, bottle cap opener & cap catcher, black powder coated exterior, galvanized interior, 1/5 HP, 115v/60/1-ph, NEMA 5-15P, cULus, UL EPH Classified, Made in USA

**BOTTLE COOLER**

True Mfg. - General Foodservice  
Model TD-95-38-HC (#960146)

**\$1,695.00 ea**

**\*\*USED\*\*** Bottle Cooler, flat top, (37.5cs) 12 oz. bottles or (55cs) 12 oz. can capacity, stainless steel counter top & (3) lids, barrel locks standard, well design, (7) PVC coated adjustable bin dividers, LED interior lighting, bottle cap opener & cap catcher, black powder coated exterior, galvanized interior, 1/4 HP, 115v/60/1-ph, 3.1 amps, NEMA 5-15P, cULus, UL EPH Classified, Made in USA

**DRAFT BEER COOLER**

Atosa USA  
Model MKC23GR (#903701)

**\$1,585.00 ea**

**\*\*NEW\*\*** Atosa Draft Beer Cooler, 23"W x 31-1/10"D x 54-4/5"H, rear-mounted self-contained refrigeration, (1) 1/2 barrel capacity (7.1 cu. ft.), (1) dual faucet tower, (1) locking solid door, Dixell digital controller, stainless steel interior & exterior, 3-1/2" casters, R290 Hydrocarbon refrigerant, 1/7 HP, 115v/60/1-ph, 2.3 amps, NEMA 5-15P, includes: manifold & ball taps, cETLus, ETL-Sanitation

**RANGE, 24" RESTAURANT, GAS**

Cooking Systems Int'l  
Model DCR24-4B (#960148)

**\$850.00 ea**

**\*\*USED\*\*** Gas Range, 24"W, stainless steel exterior including front, back sides, kick plate, back guard and over shelf, 12" X 12" removable cast iron top grates, 3/4" NPT rear gas connection, enamel interior oven, 6" casters, CSA-Sanitation, cCSAus



**RANGE, 36" 6 OPEN BURNERS**  
**Atosa USA**  
**Model AGR-6B-NG (#900781)**

**\$1,995.00 ea**

**\*\*NEW\*\*** CookRite Range, natural gas, 36"W x 31"D x 57-3/8"H, (6) 32,000 BTU open burners, removable cast iron top grates, (1) 26-1/2"W oven, (2) adjustable chrome oven racks, pilot light, drip tray, stainless steel front, back sides, kick plate, back guard & over shelf, (4) casters, 219,000 total BTU's, cETLus, ETL-Sanitation



**RANGE, 36", 6 OPEN BURNERS**  
**Vulcan**  
**Model 36-6BN (#960072)**

**\$1,350.00 ea**

**\*\*USED\*\*** Restaurant Range, natural gas, 36", (6) 28,000 BTU burners with lift-off burner heads, standard oven, stainless steel front, sides, backriser & lift-off high shelf, 6" adjustable legs, 198,000 BTU, ETL-Sanitation



**RANGE, 36", 2 BURNERS, 24" GRIDDLE**  
**Vulcan**  
**Model 36S-2B24G (#960135)**

**\$1,850.00 ea**

**\*\*USED\*\*** Restaurant Range, gas, 36", (2) 30,000 BTU burners, (1) 24" griddle, 3/4" thick plate, lift-off burner heads, standard oven, 4" W front grease trough, stainless steel front, sides, backriser & lift-off high shelf, 6" adjustable legs, CSA Flame, CSA Star, NSF



**RANGE, 60" RESTAURANT, GAS**  
**Migali Industries**  
**Model C-RO6-24GL-LP (#960134)**

**\$2,250.00 ea**

**\*\*USED\*\*** Range with Griddle, nat gas, 60" W, (6) 23,000 BTU burners, cast iron grates, (1) 24" griddle (left), 3/4" thick steel plate, (2) 27,000 BTU ovens, stainless steel backsplash with top shelf, stainless steel exterior cETLus



**HOTPLATE, COUNTERTOP, GAS**  
**Atosa USA**  
**Model ACHP-2 (#900350)**

**\$529.00 ea**

**\*\*NEW\*\*** CookRite Hotplate, counter top, gas, 12"W x 27-3/5"D x 13-1/10"H, (2) 32,000 BTU burners, manual controls, standby pilots, cast iron grates, stainless steel crumb tray, stainless steel structure, adjustable stainless steel legs, 64,000 BTU, cETLus, ETL-Sanitation **\*\*2EA AVAILABLE\*\***



**GRIDDLE, GAS, COUNTERTOP**  
**Atosa USA**  
**Model ATMG-36 (#905687)**

**\$1,265.00 ea**

**\*\*NEW\*\*** CookRite Heavy Duty Griddle, gas, countertop, 36"W x 28-3/5"D x 15-1/5"H, (35-7/10"W x 19-9/10"D cooking area), 3/4" thick griddle plate, (3) stainless steel burners, standby pilots, independent manual controls, stainless steel structure, adjustable stainless steel legs, 90,000 total BTU's, cETLus, ETL-Sanitation



**GRIDDLE, GAS, COUNTERTOP**  
**Connerton**  
**Model CEG-37-M (#960122)**

**\$1,750.00 ea**

**\*\*USED\*\*** Griddle, countertop, gas, 37"W x 24"D x 3/4" thick highly polished steel griddle plate, thermostatic controls, 3/4" NPT rear gas connection, aluminized steel body, drip pan & fire box, stainless steel front panel, gutter & 10" high splash, NSF, CSA **\*\*2EA AVAILABLE\*\***



**GRIDDLE, GAS, COUNTERTOP**  
**Star**  
**Model 836TA (#960151)**

**\$2,000.00 ea**

**\*\*USED\*\*** Ultra-Max® Griddle, countertop gas, 36" W x 24" D cooking surface, 1" thick steel griddle plate, 150° - 550° F embedded mechanical snap-action thermostat every 12", 4-3/8" tapered wrap-around splash guard, 3-1/2" front grease trough, heavy-duty metal knobs, standing pilot, welded steel frame with stainless steel exterior, 4" stainless steel legs with 1-3/8" adjustment, 90,000 BTU, cULus, UL EPH Classified, Made in USA





**GRIDDLE, GAS, COUNTERTOP  
Vulcan  
Model VCRG48-T (#960121)**

**\$2,400.00 ea**

**\*\*USED\*\*** Griddle, countertop, gas, 48" W x 24" D cooking surface, 1" thick polished steel griddle plate, (4) burners, fully welded, embedded mechanical snap action thermostat every 12", low profile, 4-1/2" grease can capacity, heavy gauge (1) drawer, 120v cord & plug for thermostat, stainless steel front, sides & front top ledge, 4" adjustable legs, 100,000 BTU, CSA, NSF



**SALAMANDER BROILER, GAS  
Atosa USA  
Model ATSB-36 (#901064)**

**\$1,765.00 ea**

**\*\*NEW\*\*** CookRite Salamander Broiler, gas, 36"W x 18"D x 17-1/3"H, (2) 21,500 BTU ceramic infrared burners & standby pilots, dual valve independent manual controls, (4) rack positions, (1) removable chrome rack, removable crumb/grease tray, stainless steel exterior & interior, 43,000 BTU, cETLus, ETL-Sanitation

**CHARBROILER, GAS, COUNTERTOP  
Atosa USA  
Model ATRC-36 (#900727)**

**\$1,365.00 ea**

**\*\*NEW\*\*** CookRite Heavy Duty Radiant Charbroiler, Natural gas, countertop, 36", (3) stainless steel burners, standby pilots, stainless steel radiant plates, cast iron grates, independent manual controls, adjustable multi-level top grates, stainless steel structure, adjustable stainless steel legs, 105,000 BTU, cETLus, ETL-Sanitation (ships with LP conversion kit)



**CONVECTION OVEN, GAS  
Blodgett  
Model DFG-100-ES SGL (#960056)**

**\$2,250.00 ea**

**\*\*USED\*\*** Convection Oven, gas, single-deck, standard depth, capacity (5) 18" x 26" pans, (SSD) solid state digital controls, 2-speed fan, interior light, simultaneous operated doors with glass, stainless steel front, sides & top, 25" stainless steel legs, 3/4 HP, 45,000 BTU, cETL, NSF, CE, ENERGY STAR®



**CONVECTION OVEN / PROOFER, ELECTRIC  
NU-VU  
Model UB-E418 (#960140)**

**\$7,000.00 ea**

**\*\*USED\*\*** Oven/Proofer, electric, oven (3) 18" x 26" or (6) 13" x 18", proofer (9) 18" x 26" or (18) 13" x 18" pan capacities, solid state controls, tempered glass oven doors, indicator lights for thermostats, manual fill proofer, separate heat & humidity controls for proofer, overflow drain & pan, stainless steel construction, heavy duty casters, 5.14kW, cETLus, NSF



**COMBI OVEN, GAS  
Cinelli Esperia  
Model (#960089)**

**\$1,250.00 ea**

**\*\*USED\*\*** Cinelli Esperia Combi Oven, natural gas, 8-full sheet pan capacity, 8-sheet pan lower storage base



**OVEN, ELECTRIC, ROTISSERIE  
BKI  
Model VGG-8-F (#960103)**

**\$2,450.00 ea**

**\*\*USED\*\*** Rotisserie Oven, electric, single deck, preheat & hold function, flat glass cool door designed, solid back, removable stainless steel parts, stainless steel exterior, CE, ETL



**CONVECTION OVEN, ELECTRIC  
Serv-Ware  
Model ECO-66 (#900142)**

**\$1,095.00 ea**

**\*\*NEW\*\*** Convection Oven, electric, countertop, single deck, half size, forced air convection, (4) half size chrome racks, pull down dual pane glass door, manual controls, 0-120 minute timer, dual wall insulation, cool-touch glass & handle, stainless steel interior & exterior, cETLus, ETL-Sanitation



**GAS FLOOR FRYER**

**Atosa USA**  
**Model ATFS-40 (#905650)**

**\$1,095.00 ea**

**\*\*NEW\*\*** CookRite Fryer, gas, floor model, 15-3/5"W x 30-1/10"D x 44-2/5"H, 40 lb. capacity, (3) burners, millivolt control, 200°F- 400°F temperature range, (2) nickel plated baskets with coated handles, basket hanger, oil cooling zone seated in the bottom of the tank, stainless steel structure, (4) casters, cETLus, ETL-Sanitation



**GAS FLOOR FRYER**

**Atosa USA**  
**Model ATFS-50 (#905651)**

**\$1,375.00 ea**

**\*\*NEW\*\*** CookRite Fryer, gas, floor model, 15-3/5"W x 30-1/10"D x 44-2/5"H, 50 lb. capacity, (4) burners, millivolt control, 200°F- 400°F temperature range, (2) nickel plated baskets with coated handles, basket hanger, oil cooling zone seated in the bottom of the tank, stainless steel structure, (4) casters, cETLus, ETL-Sanitation



**GAS FLOOR FRYER**

**Atosa USA**  
**Model ATFS-75 (#905652)**

**\$1,695.00 ea**

**\*\*NEW\*\*** CookRite Fryer, gas, floor model, 21-1/10"W x 30-1/10" x 44-2/5"H, 75 lb. capacity, (5) burners, standby pilots, 200°F- 400°F temperature range, self-reset high temperature limiting device,, safety valve, (2) nickel plated baskets with coated handles, basket hanger, oil cooling zone seated in the bottom of the tank, stainless steel structure, (4) casters, cETLus, ETL-Sanitation



**GAS FLOOR FRYER**

**American Range**  
**Model AF-35 (#960159)**

**\$650.00 ea**

**\*\*USED\*\*** Gas tube fryer, floor model, 35-40 lb. capacity fryer, 304 stainless steel TIG welded tank, thermostat control, millivolt pilot system, (2) baskets, removable crumb screen, stainless construction, (3) tube-style burners, 120,000 BTU, cETLus, ETL-Sanitation, Made in USA



**GAS FLOOR FRYER**

**Kitchen Products**  
**Model KM40-50 (#960160)**

**\$695.00 ea**

**\*\*USED\*\*** Gas tube fryer, floor model, 40-50 lb. capacity fryer, 304 stainless steel welded tank, thermostat control, millivolt pilot system, (2) baskets, removable crumb screen, stainless construction, (4) tube-style burners



**GAS FLOOR FRYER**

**ANETS**  
**Model 40AV**

**\$795.00 ea**

**\*\*USED\*\*** Tube Fired Fryer, gas, floor model, 35 lb. oil capacity, (3) 4" burners & 4" tubes, millivolt control, high limit switch, (1) clean out rod, (2) twin baskets, removable basket hanger, stainless steel tank, front, sides & door, 6" adjustable legs, 70,000 BTU, NSF, CSA Star, CSA Flame



**GAS FLOOR FRYER**

**Atosa USA**  
**Model ATFS-75-NG (#960144)**

**\$895.00 ea**

**\*\*USED\*\*** CookRite Fryer, natural gas, floor model, 21-1/10"W x 30-1/10" x 44-2/5"H, 75 lb. capacity, (5) burners, standby pilots, 200°F- 400°F temperature range, self-reset high temperature limiting device,, safety valve, (2) nickel plated baskets with coated handles, basket hanger, oil cooling zone seated in the bottom of the tank, stainless steel structure, (4) casters, cETLus, ETL-Sanitation  
**\*\*3EA AVAILABLE\*\***



**ELECTRIC FLOOR FRYER**

**Imperial**  
**Model IFS-40-E (#960041)**

**\$975.00 ea**

**\*\*USED\*\*** Fryer, electric, floor model, 40lb. capacity, immersed electrical elements, snap action thermostat, includes: wire mesh crumb screen & (2) nickel-plated baskets, stainless steel front, door, sides, basket hanger & frypot, 6" legs, 14.0kW, cETLus, CSA-Sanitation, CE



**GAS FLOOR FRYER**

**Vulcan**  
**Model LG400 (#960158)**

**\$950.00 ea**

**\*\*USED\*\*** Fryer, gas, 15-1/2" W, free-standing, 45-50 lb capacity, millivolt thermostat controls, twin baskets, legs, stainless steel front top, door & fry tank, (4) tube-style burners, 120,000 BTU, CSA Star, CSA Flame, NSF



**STEAM TABLE**

**Avenue Metal**  
**Model AVE0002 (#AVE0006)**

**\$795.00 ea**

**\*\*NEW\*\*** Wet Bath steamtable, (2) full size 12"x20" compartments, 1 water bath compartment, (1) 7,500 BTU mushroom top burner, stainless steel body w/ galvanized undershelf, Natural Gas



**HOT FOOD SERVING COUNTER / TABLE**

**Eagle Group**  
**Model DHT3-120-1X (#960088)**

**\$500.00 ea**

**\*\*USED\*\*** Hot Food Table, electric, open base, 48"W, (3) 12" x 20" (dry) wells, infinite controls, 430 stainless steel top & body, 8"D polycarbonate cutting board, galvanized steel adjustable undershelf & tubular legs, adjustable bullet feet, 1.5 kW, 120v/60/1-ph, 12.5 amps, NEMA 5-15P, UL, NSF

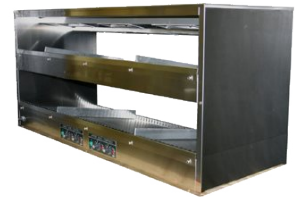


**DISPLAY MERCHANDISER, HEATED, FOR MULTI-PRODUCT BKI**

**Model 2TSM-5024L (#960014)**

**\$750.00 ea**

**\*\*USED\*\*** Sandwich Warmer, 50" x 24", (2) shelves, countertop, slanted back, slot dividers, individual thermostatic controls, ceramic infrared top heat, bottom wire shelf, stainless steel construction, 4" legs, 208v/60/1-ph, 9.66amps, 1.83kW, ETL, cETL



**MOBILE HEATED CABINET**

**Metro**  
**Model C539-HFC-4 (#960038)**

**\$1,695.00 ea**

**\*\*USED\*\*** C5™ 3 Series Heated Holding Cabinet, with Red Insulation Armour™, mobile, full height, insulated, clear polycarbonate door, removable bottom mount control module, thermostat to 200°F, fixed wire slides on 3" centers (18) 18" x 26" or (34) 12" x 20" x 2-1/2" pan capacity, 5" casters (2 with brakes), aluminum, 120v/60/1-ph, 2000 watts, 16.7 amps, NEMA 5-20P, cULus, NSF



**DISPLAY CASE, NON-REFRIGERATED BAKERY**

**MVP Group LLC**  
**Model KBF-36D (#960104)**

**\$1,000.00 ea**

**\*\*USED\*\*** Bakery Dry Display Case, freestanding, full service, 59"W x 35"D x 47", straight glass front, rear sliding doors, (6) adjustable shelves, LED top & shelf lights, tempered glass front & sides, 110v/60/1-ph, cETLus



**BEVERAGE DISPENSER, ELECTRIC (COLD)**

**AMPTO**  
**Model C1256 (#909225)**

**\$1,395.00 ea**

**\*\*NEW\*\*** Cold Beverage Dispenser, electric, counter top, (2) 3 gallon clear polycarbonate removable bowls, (2) removable gravity tap faucets, magnetic pump with fountain effect, stainless steel front, sides & rear, ETL, NSF, Made in Italy



**BEVERAGE DISPENSER, ELECTRIC (COLD)**

**AMPTO**  
**Model C1256 (#909225)**

**\$895.00 ea**

**\*\*USED\*\*** Cold Beverage Dispenser, electric, counter top, (2) 3 gallon clear polycarbonate removable bowls, (2) removable gravity tap faucets, magnetic pump with fountain effect, stainless steel front, sides & rear, ETL, NSF, Made in Italy **\*\*2EA AVAILABLE\*\***



**FROZEN DRINK MACHINE, NON-CARBONATED, BOWL TYPE  
AMPTO  
Model GRA-122 (#909224) \$2,945.00 ea**

**\*\*NEW\*\*** Frozen Drink Machine, Frosty, counter model, (2) 3 gallon clear polycarbonate bowls, manual control keypad, safety stop system, independently operating tanks, double mixing system prevents ice build up, air cooling system, R404a refrigerant, stainless steel base, 11 amps, ETL-Sanitation, Made in Italy



**ICE MAKER WITH BIN, CUBE-STYLE  
Atosa USA  
Model YR140-AP-161 (#904278) \$1,795.00 ea**

**\*\*NEW\*\*** Ice Maker with Bin, cube-style, air-cooled, self-contained condenser, 23.7"W x 28.5"D x 38.6"H, production capacity up to 142-lb/24 hours, 88 lb storage capacity, stainless steel exterior, 6" adjustable legs, includes: ice scoop, removable air filter, R290 Hydrocarbon refrigerant, 115v/60/1-ph, 3.1 amps, cETLus, ETL-Sanitation, NSF, ENERGY STAR® (drain required)



**UNDERBAR SINK UNITS  
BK Resources  
Model UB4-21-1014HSS (#904588) \$465.00 ea**

**\*\*NEW\*\*** Underbar Dump Sink, 14-1/2"W x 21-1/4"D x 32-1/2"H overall size, 10" wide x 14" front-to-back x 6" deep bowl, 4"H backsplash, 4" OC deck mount faucet holes, 18/304 stainless steel top, stainless steel legs & bracing, adjustable high impact corrosion resistant feet, NSF



**PLANETARY MIXER  
Admiral Craft Equipment Corp.  
Model BDPM-20 (#998055) \$1,395.00 cs**

**\*\*NEW\*\*** Black Diamond Planetary Mixer, 20 qt., 3-speed, gear driven transmission, #12 attachment hub, manual 60-minute timer, stainless steel wire bowl guard, includes: stainless steel mixing bowl with clamps, wire whisk, dough hook, & flat beater attachments, rubber feet, 1-1/2 HP, 120v/60/1-ph, 1.1kW, 9.0 amps, cord, NEMA 5-15P, cETLus, ETL-Sanitation (NET)



**PLANETARY MIXER  
Hobart  
Model HL600-1 (#960164) \$5,895.00 ea**

**\*\*USED\*\*** Hobart Planetary Mixer - Unit Only, 1 HP, 60 quart capacity bowl, (4) fixed speeds, gear-driven transmission, 20-Minute SmartTimer™, #12 taper attachment hub, dough hook attachment, 115V / 60Hz / 1PH, NSF



**MICROWAVE OVEN  
Sharp  
Model R-21LCFS (#905011) \$345.00 ea**

**\*\*NEW\*\*** Microwave Oven, medium duty, 1000 watts, 1.0 cu. ft. capacity, stainless steel door, cavity and outer wrapper, durable side-hinged see-thru door, (1) power level, 6 minutes manual light up dial timer, timer heating-time guide, timer resets to 0 when door is opened during cooking cycle, 120v/60/1-ph, 14 amp, NEMA 5-15P, UL, NSF



**MICROWAVE OVEN  
Sharp  
Model R-21LVF (#905012) \$395.00 ea**

**\*\*NEW\*\*** Microwave Oven, medium duty, 1000 watts, 1.0 cu. ft. capacity, stainless steel door, cavity, and outer wrapper, digital programmable controls, durable side-hinged see-thru door, Express Defrost™, (1) power level, (10) computerized touch pads, double quantity, 120v/60/1-ph, 14 amp, NEMA 5-15P, UL, NSF



**HEAT LAMP  
Hatco  
Model GRAHL-120 (#960033) \$450.00 ea**

**\*\*USED\*\*** Glo-Ray® Infrared Foodwarmer, 120" W, high wattage, tubular metal heater rod with lights, single heater rod housing, aluminum construction, 3400 watts, 120V, contains tandem elements, NSF, cULus, Made in USA





**HEAT LAMP**

Hatco  
Model GRAHL-72 (#960035)

**\$295.00 ea**

**\*\*USED\*\*** Glo-Ray® Infrared Foodwarmer, 72" W, high wattage, tubular metal heater rod with lights, single heater rod housing, aluminum construction, 2085 watts, 120V, NSF, cULus, Made in USA



**HEAT LAMP**

Hatco  
Model GRAH-24-120-T-QS (#999919)

**\$219.00 ea**

**\*\*NEW\*\*** Glo-Ray® Infrared Strip Heater, 24" W, high wattage, tubular metal heater rod, single heater rod housing, built-in toggle switch & conduit, aluminum construction, 500 watts, 120v/60/1-ph, NSF, CE, cULus, Made in USA



**HEAT LAMP**

Hatco  
Model GRAH-48 (#960127)

**\$250.00 ea**

**\*\*USED\*\*** Glo-Ray® Infrared Strip Heater, 48" W, high wattage, tubular metal heater rod, single heater rod housing, aluminum construction, 1100 watts, NSF, CE, cULus, Made in USA



**HEAT LAMP**

Hatco  
Model GRAH-72 (#960126)

**\$300.00 ea**

**\*\*USED\*\*** Glo-Ray® Infrared Strip Heater, 72" W, high wattage, tubular metal heater rod, single heater rod housing, aluminum construction, 1725 watts, NSF, CE, cULus, Made in USA **\*\*2EA AVAILABLE\*\***



**HEAT LAMP**

Hatco  
Model GRAHL-36D (#904531)

**\$795.00 ea**

**\*\*NEW\*\*** Glo-Ray® Infrared Strip Heater, 36" W, high wattage, tubular metal heater rod with lights, single heater rod housing, built in toggle switch & conduit, aluminum construction, 980 watts, NSF, CE, cULus, Made in USA



**HEAT LAMP**

Nemco Food Equipment  
Model 6006-4 (#904307)

**\$495.00 ea**

**\*\*NEW\*\*** Heat Lamp, single row suspension bar, chain hung, 4 bulb, 120v/60/1ph, 1000 watts, white 250 watt infrared bulbs standard, red 250 watt infrared bulb and white shatter-resistant 250 watt bulb also available



**HAMBURGER PATTY PRESS, COUNTERTOP**

American Eagle Food Machinery  
Model AE-HP100 (#998898)

**\$200.00 ea**

**\*\*NEW\*\*** Hamburger Press, manual, 4" dia., 2 oz. - 8 oz. portions, 1/4" - 1" thick patties, stainless steel food contact surfaces, top mounted wax paper liner holder, cast aluminum body, rubber feet, CE, NSF



**FOOD PAN WARMER, COUNTERTOP**

Atosa USA  
Model 7700 (#905050)

**\$189.00 ea**

**\*\*NEW\*\*** Food Warmer, countertop, electric, 12" x 20" pan opening, infinite controls, stainless steel construction, 120v/60/1-ph, 1200w, 10.0 amps, NSF



**RICE / GRAIN WARMER**

**Thunder Group**  
**Model SEJ22000 (#500999)**

**\$229.00 ea**

**\*\*NEW\*\*** Rice Warmer, electric, 50 cup capacity, 15-1/2" dia. x 15-1/4"H, non-stick inner pot, spatula included, up to 12 hour hold time, stainless steel hinged cover & exterior, mirror finish, 120v/60/1-ph, 100 watt, UL, NSF

**JERKY SLICER ATTACHMENT**

**American Eagle Food Machinery**  
**Model AE-JS12H (#904211)**

**\$545.00 ea**

**\*\*NEW\*\*** Jerky Slicer Attachment Head, produces 1/4" strips, single piece combs, stainless steel blades, stainless steel construction, fits #12 hub

**WAFFLE MAKER / BAKER**

**Waring**  
**Model WWD200 (#920053)**

**\$565.00 ea**

**\*\*NEW\*\*** Classic Waffle Maker, double, up to (60) 7" diameter, 5/8" thick waffles per hour, audio beep signal, rotary feature, embedded heating element, temperature control knob with (6) settings, non-stick plates, heavy duty die cast housing, includes: measuring cup & drip tray, 120v/60/1-ph, 1.3kW, 12.0 amps, cord, NEMA 5-15P, NSF, cETLus  
**\*\*2EA AVAILABLE\*\***

**IMMERSION BLENDER**

**Waring**  
**Model WSB60 (#905101)**

**\$725.00 ea**

**\*\*NEW\*\*** Big Stix® Immersion Blender, heavy duty, 100 qt. (25 gallon) capacity, 16" stainless steel removable shaft, variable speed motor, continuous ON feature, rubberized comfort grip, 1 HP, 120v, 750W, 6.25 amps, NSF



**COMMERCIAL FOOD BLENDER**  
**Avantec Equipment**  
**Model BX1GRGV (#966521)**

**\$1,095.00 ea**

**\*\*NEW\*\*** Food Blender, 14-7/8"W x 15"D x 26"H, (1) gallon capacity, removable stainless steel container with (2) handles, clear lid, die cast base, 3-3/4 HP, 120v/60/1-ph, 15 amps, cETLus, NSF



**MEAT CHOPPER / GRINDER, ATTACHMENT**  
**Uniworld Foodservice Equipment**  
**Model 812HCPL (#999418)**

**\$195.00 ea**

**\*\*NEW\*\*** Hobart Type Grinder Attachment, tin plated, #12 hub, includes 812HRWC, 812GK, 812GP1/4", 812PN & 812&22PLS

**CAN OPENER**

**Edlund**  
**Model 1 (#506020)**

**\$149.00 ea**

**\*\*NEW\*\*** Can Opener, manual, #1™ with plated base (for cans up to 11" tall) "Old Reliable"™

**POP-UP TOASTER**

**Hatco**  
**Model TPT-240 (#960112)**

**\$250.00 ea**

**\*\*USED\*\*** Pop-Up Toaster, (4) 1-1/4" wide self centering slots, individual toasting controls, selector switch for double or single sided toasting, removable crumb tray, stainless steel construction, cULus, UL EPH Classified



**BREAD SLICER**  
**Oliver**  
**Model 777-N (#960063)**

**\$3,000.00 ea**

**\*\*USED\*\*** Legacy Variety Bread Slicer, specify slice thickness, compact, up to 600 loaves per hour, holds bread in place, blades are mounted independently, includes bagging scoop, white powder coat finish 1/2 HP, NSF, cULus, Made in USA



**COLD FOOD BUFFET, TABLETOP**  
**Cambro**  
**Model BBR720110 (#960064)**

**\$350.00 ea**

**\*\*USED\*\*** Versa Buffet Bar, with sneeze guard, 73-7/8"L x 24-1/8" x 24-1/2"H, table top, with iced cold pan, 5-pan size, double-wall polyethylene, non-electrical, black, NSF



**CLEAN DISHTABLE**  
**Advance Tabco**  
**Model DTC-S70-24R (#998093)**

**\$595.00 ea**

**\*\*NEW\*\*** Dishtable, clean, straight design, attaches to right of dish machine operator, 10-1/2"H backsplash, 3" rolled front & side rims, stainless steel legs, with crossrails, 23"W x 30"D x 34"H, 16/304 stainless steel



**SOILED DISHTABLE**  
**Elkay Foodservice Products**  
**Model DDT-48-LX (#960018)**

**\$550.00 ea**

**\*\*USED\*\*** Soiled Dishtable, 1-1/2" rolled rim design 48"W, 34" working height, 10-3/4"H backsplash, stainless steel legs, left-to right operation, 16 gauge 300 series stainless steel, NSF **\*\*2EA AVAILABLE\*\***



**CLEAN DISHTABLE**  
**Elkay Foodservice Products**  
**Model CDT-72-RX (#960019)**

**\$375.00 ea**

**\*\*USED\*\*** Clean Dishtable, 1-1/2" rolled rim design, 89"W x 30"D (O.A.), 34" working height, 10-3/4"H backsplash, stainless steel legs, w/ 12" x 72" attached stainless steel overshelf, right-to-left operation, 16 gauge 300 series stainless steel, NSF



**DISHTABLE SORTING SHELF**  
**BK Resources**  
**Model BK-SSH-63 (#907253)**

**\$389.00 ea**

**\*\*NEW\*\*** Slant Rack Shelf, wall mount, 63"W, rolled front edge, weep accepts 1" nylon tubing (nylon tubing sold separately), includes mounting brackets, 18/304 stainless steel construction, NSF



**CLEAN DISHTABLE**  
**BK Resources**  
**Model BKCDT6-72-R-SS (#907239)**

**\$1,235.00 ea**

**\*\*NEW\*\*** Heavy Duty Clean Dishtable, straight design, 72"W x 30-7/8"D x 46-1/4"H, left-to-right operation, 16/304 stainless steel top, 10"H backsplash, raised rolled edges on front & sides, stainless steel legs & side bracing, adjustable stainless steel over plastic bullet feet, NSF



**THREE (3) COMPARTMENT SINK**  
**Eagle Group**  
**Model 414-16-3-18 (#960147)**

**\$750.00 ea**

**\*\*USED\*\*** Stainless Steel Sink, three compartment, 74-3/8"W x 27-1/2"D, 430 stainless steel top with 304 stainless steel sink bowls, coved corners, 16"W x 20" front-to-back x 13-1/2" deep compartments, 18" drainboard on right, 9-1/2"H backsplash with 1" upturn & tile edge, 8" OC splash mount faucet holes, includes (3) 3-1/2" basket drains, galvanized legs & side crossbracing, adjustable plastic bullet feet, NSF



**TWO (2) COMPARTMENT SINK**  
**BK Resources**  
**Model BKS-2-24-14-24T (#900224)**

**\$750.00 ea**

**\*\*NEW\*\*** Sink, two compartment, 96"W x 29-13/16"D x 43-3/4"H overall size, 24" wide x 24" front-to-back x 14" deep compartments, (2) left & right 24" drainboards, 9"H backsplash, 8" OC splash mount faucet holes, 1-1/2" rolled edges on front & sides, includes basket drains (BKDR-4), 18/304 stainless steel construction, galvanized steel legs, adjustable high impact corrosion resistant feet, NSF



**ONE (1) COMPARTMENT SINK**  
**Atosa USA**  
**Model MRSA-1-R (#907400)**

**\$835.00 ea**

**\*\*NEW\*\*** MixRite Sink, 1-compartment, 39"W x 24"D x 44-1/2"H overall, (1) 18"W x 18" front-to-back x 12" deep sink compartment, 18" right hand drainboard, 18 gauge stainless steel, galvanized legs, adjustable ABS feet, NSF (must be purchased in quantities of (6 each), unless doing will call pick up)



**ONE (1) COMPARTMENT SINK**  
**Suprema Fan Products**  
**Model (#960107)**

**\$300.00 ea**

**\*\*USED\*\*** Stainless Steel prep sink, 1-compartment, 39"W x 24"D, (1) 12"W x 14" front-to-back x 10" deep sink compartment, 24" right hand drainboard, galvanized legs, NSF



**DROP-IN SINK**  
**Eagle Group**  
**Model (#960106)**

**\$125.00 ea**

**\*\*USED\*\*** Drop-In Sink, one compartment, 18" wide x 18" front-to-back x 8" deep bowl, 4" OC deck mount faucet with gooseneck spout, NSF



**WORK TABLE, WITH PREP SINK(S)**  
**John Boos**  
**Model SS-4PT-96 (#960123)**

**\$1,500.00 ea**

**\*\*USED\*\*** Stainless steel work table with prep sink, 96", 16" x 20" x 12" deep welded in sink, double table-mounted pot rack, 1-5/8" diameter stainless steel legs with 1" adjustable bullet feet



**WORK TABLE, WITH PREP SINK(S)**  
**BK Resources**  
**Model BKMPPT-3072S-L (#997989)**

**\$1,695.00 ea**

**\*\*NEW\*\*** Work Table with Prep Sink, sink on left, 72"W x 30"D x 41-3/4"H overall size, 18/304 stainless steel top with marine edge, 6" backsplash, (1) 16" wide x 20" front-to-back x 10" deep sink bowl, 4" O.C. deck mount faucet holes, adjustable stainless steel undershelf with cast aluminum corners, stainless steel legs with stainless steel bullet feet, NSF



**UNDERBAR SINK UNITS**  
**BK Resources**  
**Model UB4-21-360TS (#930001)**

**\$1,265.00 ea**

**\*\*NEW\*\*** Underbar Sink, three compartment, 60"W x 21-1/4"D x 32-1/2"H overall size, 10" wide x 14" front-to-back x 10" deep compartments, (2) left & right 13-1/2" stamped drainboards, 4-1/2"H backsplash, 4" OC deck mount lead-free faucet (BKD-10-G), stainless steel apron on front & sides, includes basket drains (BKDR-2) & removable overflow standpipes (BK-OT-15075), 18/304 stainless steel construction, stainless steel legs & adjustable side bracing, adjustable high impact corrosion resistant feet, NSF



**STORAGE CABINET**  
**Advance Tabco**  
**Model PRSCD-24-24-M (#999553)**

**\$500.00 ea**

**\*\*NEW\*\*** Prestige Underbar Drainboard Cabinet, with removable hinged doors, 24"W x 30"D x 36"H, 7" backsplash, removable perforated drainboard top, drain pan with 1" drain, (1) fixed mid-shelf in cabinet, stainless steel construction, adjustable stainless steel bullet feet, NSF





**UNDERBAR SINK UNITS**

**BK Resources**  
**Model UB4-21-1012HST-15 (#930134)**

**\$875.00 ea**

**\*\*NEW\*\*** Underbar Dump Sink, 15"W x 21-1/4"D x 32-1/2"H overall size, 12" front-to-back compartment, 4"H backsplash, 4" OC splash mount faucet holes, includes: strainer basket, soap dispenser (BK-UCSD-1), basket drain (BKDR-2) & towel dispenser, 18/304 stainless steel construction, stainless steel legs & bracing, adjustable high impact corrosion resistant feet, NSF



**CASH REGISTER STAND**

**BK Resources**  
**Model CST-2424-2H (#997781)**

**\$650.00 ea**

**\*\*NEW\*\*** Point of Sale Work Station, 24"W x 24"D x 34-3/4"H, (1) adjustable shelf, cord management hole & rubber grommet in top and back, 5" wheel casters, 18/304 stainless steel construction



**WORK TABLE, STAINLESS STEEL TOP**

**Royal Industries**  
**Model ROY WT 2424 (#907000)**

**\$239.00 ea**

**\*\*NEW\*\*** Work Table, 24"W x 24"D, bullnose edge front and back, galvanized undershelf and legs, plastic feet, 18 gauge 430 stainless steel top, NSF, knocked down



**WORK TABLE, STAINLESS STEEL TOP**

**Royal Industries**  
**Model ROY WT 2430 (#960129)**

**\$145.00 ea**

**\*\*USED\*\*** Work Table, 30"W x 24"D, bullnose edge front and back, galvanized undershelf and legs, plastic feet, 18 gauge 430 stainless steel top, NSF



**WORK TABLE, STAINLESS STEEL TOP**

**Atosa USA**  
**Model SSTW-3030 (#904730)**

**\$279.00 ea**

**\*\*NEW\*\*** MixRite Work Table, 30"W x 30"D x 34"H, 18/430 stainless steel top with turned down edges, 18/430 stainless steel adjustable undershelf & legs, adjustable bullet feet, NSF, KD



**WORK TABLE, STAINLESS STEEL TOP**

**Atosa USA**  
**Model SSTW-3036 (#907429)**

**\$295.00 ea**

**\*\*NEW\*\*** MixRite Work Table, 36"W x 30"D x 34"H, 18/430 stainless steel top with turned down edges, 18/430 stainless steel adjustable undershelf & legs, adjustable bullet feet, NSF, KD



**WORK TABLE, STAINLESS STEEL TOP**

**BK Resources**  
**Model SVTR-3630 (#907860)**

**\$295.00 ea**

**\*\*NEW\*\*** Work Table, 36"W x 30"D, 18/430 stainless steel top, with turndown edges on front & sides, reinforced with channels, 1-1/2" rear riser, adjustable stainless steel undershelf, 1-5/8" dia. stainless steel legs, stainless steel over plastic adjustable bullet feet, NSF



**WORK TABLE, STAINLESS STEEL TOP**

**BK Resources**  
**Model SVTR5-3624 (#907010)**

**\$395.00 ea**

**\*\*NEW\*\*** Work Table, 36"W x 24"D, 18/430 stainless steel top, with turndown edges on front & sides, reinforced with channels, 5" backsplash, adjustable stainless steel undershelf, 1-5/8" dia. stainless steel legs, stainless steel bullet feet, NSF



**WORK TABLE, STAINLESS STEEL TOP**  
**Atosa USA**  
**Model SSTW-3048 (#907432)**

**\$345.00 ea**

**\*\*NEW\*\*** MixRite Work Table, 48"W x 30"D x 34"H, 18/430 stainless steel top with turned down edges, 18/430 stainless steel adjustable undershelf & legs, adjustable bullet feet, NSF, KD



**WORK TABLE, STAINLESS STEEL TOP**  
**Atosa USA**  
**Model SSTW-3060 (#907433)**

**\$419.00 ea**

**\*\*NEW\*\*** MixRite Work Table, 60"W x 30"D x 34"H, 18/430 stainless steel top with turned down edges, 18/430 stainless steel adjustable undershelf & legs, adjustable bullet feet, NSF, KD



**WORK TABLE, STAINLESS STEEL TOP**  
**BK Resources**  
**Model VTTR5-6024 (#907090)**

**\$495.00 ea**

**\*\*NEW\*\*** Work Table, 60"W x 24"D, 18/430 stainless steel top, with turndown edges on front & sides, reinforced with channels, 5" backsplash, adjustable galvanized undershelf, 1-5/8" dia. galvanized legs, adjustable high-impact corrosion-resistant feet, NSF



**WORK TABLE, STAINLESS STEEL TOP**  
**Atosa USA**  
**Model SSTW-3072 (#907434)**

**\$435.00 ea**

**\*\*NEW\*\*** MixRite Work Table, 72"W x 30"D x 34"H, 18/430 stainless steel top with turned down edges, 18/430 stainless steel adjustable undershelf & legs, adjustable bullet feet, NSF, KD



**WORK TABLE, STAINLESS STEEL TOP**  
**Thunder Group**  
**Model SLWT43096F (#999901)**

**\$295.00 ea**

**\*\*USED\*\*** Work Table, 30" x 96" x 35", 18 gauge/430 stainless steel flat top, turn-down edges, galvanized steel adjustable undershelf & 6 legs, 1" adjustable plastic bullet feet, KD, NSF



**WORK TABLE, STAINLESS STEEL TOP**  
**Royal Industries**  
**Model ROY WT 2472 (#960139)**

**\$225.00 ea**

**\*\*USED\*\*** Work Table, 72"W x 30"D, galvanized undershelf and legs, plastic feet, stainless steel top, NSF



**EQUIPMENT STAND**  
**Royal Industries**  
**Model ROY ES 3048 (#907442)**

**\$395.00 ea**

**\*\*NEW\*\*** Equipment Stand, 30" x 48", 900 lb capacity, front rolled edge, 3-sided riser with hemmed edge, stainless steel top, galvanized undershelf and legs, bullet feet, NSF



**WORK TABLE, UNDERSHELF**  
**BK Resources**  
**Model VTS-4824 (#980020)**

**\$30.00 ea**

**\*\*NEW\*\*** Undershef, galvanized steel, for 48"W x 24"D work table **\*\*2EA AVAILABLE\*\***



**WORK TABLE, UNDERSHELF**  
**BK Resources**  
**Model VTS-4830 (#980020)**

**\$45.00 ea**

**\*\*NEW\*\*** Undershef,  
galvanized steel, for 48"W x  
30"D work table **\*\*2EA**  
**AVAILABLE\*\***



**WORK TABLE, UNDERSHELF**  
**BK Resources**  
**Model VTS-7224 (#980020)**

**\$45.00 ea**

**\*\*NEW\*\*** Undershef,  
galvanized steel, for 72"W x  
24"D work table **\*\*2EA**  
**AVAILABLE\*\***



**WORK TABLE, UNDERSHELF**  
**BK Resources**  
**Model VTS-9624 (#980020)**

**\$60.00 ea**

**\*\*NEW\*\*** Undershef,  
galvanized steel, for 96"W x  
24"D work table



**WORK TABLE, UNDERSHELF**  
**BK Resources**  
**Model VTS-1872 (#980020)**

**\$35.00 ea**

**\*\*NEW\*\*** Undershef,  
galvanized steel, for 72"W x  
18"D work table



**OVERSHELF**  
**BK Resources**  
**Model BK-OSS-1836 (#904092)**

**\$275.00 ea**

**\*\*NEW\*\*** Single Overshef,  
table mount, 36"W x 18"D x  
18"H, 18/304 stainless steel,  
self tapping screws, shipped  
KD, NSF



**OVERSHELF**  
**Atosa USA**  
**Model MROS-4RE (#904396)**

**\$295.00 ea**

**\*\*NEW\*\*** Overshef, double, 48-  
1/4"W x 12-8/10"D x 33"H,  
sound deadened,  
adjustable, 18/430 stainless  
steel, NSF **\*\*2EA AVAILABLE\*\***



**OVERSHELF**  
**BK Resources**  
**Model BK-OSD-1296 (#997732)**

**\$485.00 ea**

**\*\*NEW\*\*** Double Overshef,  
table mount, 96"W x 12"D x 31-  
1/4"H, 18/430 stainless steel,  
adjustable lower shelf, self  
tapping screws, shipped KD,  
NSF



**OVERSHELF**  
**BK Resources**  
**Model BK-OSD-1296 (#960143)**

**\$325.00 ea**

**\*\*USED\*\*** Double Overshef,  
table mount, 96"W x 12"D x 31-  
1/4"H, 18/430 stainless steel,  
adjustable lower shelf, self  
tapping screws, shipped KD,  
NSF



**OVERSHELF**  
**Atosa USA**  
**Model MROS-67P (#904347)**

**\$425.00 ea**

**\*\*NEW\*\*** Overshelf, double, for pizza prep table, 67"W x 14"D x 47"H, sound deadened, adjustable, 18/430 stainless steel, NSF



**SOLID SHELVING**  
**BK Resources**  
**Model BKPS-1410 (#997606)**

**\$75.00 ea**

**\*\*NEW\*\*** Printer Shelf, 14"W x 10"D x 9"H, hole in shelf for cords, T-304 16 gauge stainless steel, for ticket printers



**KEG STORAGE RACK**  
**Channel Manufacturing**  
**Model KAR60 (#960150)**

**\$395.00 ea**

**\*\*USED\*\*** Keg Storage, Adjustable, 60"W x 17"D x 68"H, Aluminum Construction, (6) Half Barrels or (18) 1/6th Barrels, Made in USA, 52lbs. (ITEM WEIGHT ONLY), includes uprights (set of 4), weight does not include 50 lbs. for pallet weight **\*\*3EA AVAIL\*\***



**WIRE SHELVING**  
**Thunder Group**  
**Model CMEP2460 (#980020)**

**\$40.00 ea**

**\*\*SCRATCH & DENT\*\*** Wire Shelving, 24" x 60", 600 lb. capacity, with 4 sets of sleeve clips, heavy duty, epoxy coated, green, NSF **\*\*3EA AVAILABLE\*\***



**WIRE SHELVING**  
**Thunder Group**  
**Model CMEP2454 (#980020)**

**\$35.00 ea**

**\*\*SCRATCH & DENT\*\*** Wire Shelving, 24" x 54", 600 lb. capacity, with 4 sets of sleeve clips, heavy duty, epoxy coated, green, NSF **\*\*3EA AVAILABLE\*\***



**WIRE SHELVING**  
**Thunder Group**  
**Model CMEP2448 (#980020)**

**\$30.00 ea**

**\*\*SCRATCH & DENT\*\*** Wire Shelving, 24" x 48", 850 lb. capacity, with 4 sets of sleeve clips, heavy duty, epoxy coated, green, NSF **\*\*4EA AVAILABLE\*\***



**WIRE SHELVING**  
**Thunder Group**  
**Model CMEP1472 (#980020)**

**\$25.00 ea**

**\*\*SCRATCH & DENT\*\*** Wire Shelving, 14" x 72", 600 lb. capacity, with 4 sets of sleeve clips, heavy duty, epoxy coated, green, NSF **\*\*2EA AVAILABLE\*\***



**WIRE SHELVING**  
**Thunder Group**  
**Model CMSV2448 (#980020)**

**\$30.00 ea**

**\*\*SCRATCH & DENT\*\*** Wire Shelving, 24" x 48", chrome plated finish, NSF **\*\*5EA AVAILABLE\*\***





**WIRE SHELVING**

**Thunder Group  
Model CMSV2154 (#980020)**

**\$30.00 ea**

**\*\*SCRATCH & DENT\*\*** Wire Shelving, 21" x 54", chrome plated finish, NSF **\*\*5EA AVAILABLE\*\***



**WIRE SHELVING**

**Thunder Group  
Model CMSV2460 (#980020)**

**\$40.00 ea**

**\*\*SCRATCH & DENT\*\*** Wire Shelving, 24" x 60", chrome plated finish, NSF **\*\*9EA AVAILABLE\*\***



**WIRE SHELVING**

**Thunder Group  
Model CMSV2472 (#980020)**

**\$45.00 ea**

**\*\*SCRATCH & DENT\*\*** Wire Shelving, 24" x 72", chrome plated finish, NSF **\*\*3EA AVAILABLE\*\***



**SOLID SHELVING**

**Metro  
Model 2448FS (#908033)**

**\$345.00 ea**

**\*\*NEW\*\*** Super Erecta® Shelf, solid, 48"W x 24"D, stainless steel, flat, raised "ship's edge" on all (4) sides, aluminum castings lock corners to posts, NSF **\*\*2EA AVAILABLE\*\***



**CHAIR**

**JustChair Manufacturing  
Model W20118-BVS (#904267)**

**\$45.00 ea**

**\*\*USED\*\*** Side Chair, ladder back, upholstered green vinyl padded seat, German beech wood frame, non-marring nylon glides **\*\*16EA AVAILABLE\*\***



**CHAIR**

**Riverstone Restaurant Furniture  
Model RF-RR77315 (#960062)**

**\$10.00 ea**

**\*\*USED\*\*** Stacking Banquet Chair, crown design seamless back panel, green fabric upholstered seat and back, gold vein powder coated frame finish, plastic floor glides **\*\*62EA AVAILABLE\*\***



**CHAIR / BAR STOOL SEAT**

**JustChair Manufacturing  
Model SEAT-PADDED-W-BVS (#999186)**

**\$33.45 ea**

**\*\*NEW\*\*** Seat, padded, for wood/metal chairs, black vinyl **\*\*5EA AVAILABLE\*\***



**BOOTH**

**Oak Street  
Model WD-7242-SGL (#960091)**

**\$200.00 ea**

**\*\*USED\*\*** Dining Booth, single, 39" H, 12" vertical channel back, Brown vinyl seat, Brown fabric back, finished ends and back, top and side cap construction **\*\*2EA AVAILABLE 72" - 1EA AVAILABLE 69" - 1EA AVAILABLE 60"\*\*\***



**BOOTH**  
Custom  
Model (#960032)

**\$250.00 ea**

**\*\*USED\*\*** L-Corner Booth, 51" x 42" x 46" H, walnut wood base, brown vinyl seat **\*\*3EA AVAILABLE\*\***

**BOOTH**  
ATS MFG  
Model QAS-36 GR4 (#999984)

**\$145.00 ea**

**\*\*NEW\*\*** Standard Booth, single, 46" long x 36" high, plain back, removable standard foam seat with connecting links, upholstered, heavy duty hardwood frame, 4-3/4" high vinyl kick base, finished outside back, grade 4 uph. **\*\*WINE COLOR FINISH\*\***



**BOOTH**  
ATS MFG  
Model QAD-36 GR4 (#999985)

**\$235.00 ea**

**\*\*NEW\*\*** Standard Booth, Double, 46" long x 36" high, plain back, removable standard foam seat with connecting links, upholstered, heavy duty hardwood frame, 4-3/4" high vinyl kick base, grade 4 uph. **\*\*BLACK COLOR FINISH\*\***



**LAMINATE TABLE TOP**  
JustChair Manufacturing  
Model TTLMVM-2847 (#960027)

**\$50.00 ea**

**\*\*USED\*\*** Table Top, rectangular, 28" x 47", black vinyl T-mold edge, Wilsonart® laminate Red **\*\*2EA AVAILABLE\*\***



**LAMINATE TABLE TOP**  
JustChair Manufacturing  
Model TTLMVM-2847 (#960027)

**\$50.00 ea**

**\*\*USED\*\*** Table Top, rectangular, 28" x 47", black vinyl T-mold edge, Wilsonart® laminate Grey Speckle **\*\*6EA AVAILABLE\*\***



**LAMINATE TABLE TOP**  
JustChair Manufacturing  
Model TTLMVM-2823 (#960028)

**\$30.00 ea**

**\*\*USED\*\*** Table Top, rectangular, 28" x 23", black vinyl T-mold edge, Wilsonart® laminate Grey Speckle **\*\*4EA AVAILABLE\*\***



**LAMINATE TABLE TOP**  
JustChair Manufacturing  
Model TTLMVM-2823 (#960028)

**\$30.00 ea**

**\*\*USED\*\*** Table Top, rectangular, 28" x 23", black vinyl T-mold edge, Wilsonart® laminate Red **\*\*4EA AVAILABLE\*\***



**LAMINATE TABLE TOP**  
JustChair Manufacturing  
Model TTLMVM-36R (#960029)

**\$50.00 ea**

**\*\*USED\*\*** Table Top, 36" Round, black vinyl T-mold edge, Wilsonart® laminate Grey Speckle **\*\*1EA AVAILABLE\*\***



LAMINATE TABLE TOP  
JustChair Manufacturing  
Model TTLMVM-36R (#960029)

\$50.00 ea

**\*\*USED\*\*** Table Top, 36" Round, black vinyl T-mold edge, Wilsonart® laminate Red **\*\*2EA AVAILABLE\*\***



LAMINATE TABLE TOP  
JustChair Manufacturing  
Model TTLMVM-48R (#960030)

\$60.00 ea

**\*\*USED\*\*** Table Top, 48" Round, black vinyl T-mold edge, Wilsonart® laminate Grey Speckle **\*\*1EA AVAILABLE\*\***



LAMINATE TABLE TOP  
ATS MFG  
Model ADL3060-GY/BN (#995554)

\$80.00 ea

**\*\*NEW\*\*** Reversible Table Top, rectangle, 30" x 60", 2" radius corners, double laminate with black T-mold edge, light gray/light brown, **\*\*2EA AVAILABLE\*\***



LAMINATE TABLE TOP  
Royal Industries  
Model ROY RTT BM 2430 T (#910004)

\$20.00 ea

**\*\*NEW\*\*** Reversible Table Top, rectangular, 24" x 30", 1" thick, t-molding edges, melamine tops, black/mahogany **\*\*6EA AVAILABLE\*\***



LAMINATE TABLE TOP  
Royal Industries  
Model ROY RTT BM 3030 T (#910003)

\$35.00 ea

**\*\*NEW\*\*** Reversible Table Top, square, 30" x 30", 1" thick, t-molding edges, melamine tops, black/mahogany **\*\*32EA AVAILABLE\*\***



LAMINATE TABLE TOP  
Royal Industries  
Model ROY RTT 2442 T (#910041)

\$60.85 ea

**\*\*NEW\*\*** Reversible Table Top, rectangular, 24" x 42", 1" thick, t-molding edges, melamine tops, oak/walnut **\*\*5EA AVAILABLE\*\***



LAMINATE TABLE TOP  
Royal Industries  
Model ROY RTT BM 3048 T (#910006)

\$83.40 ea

**\*\*NEW\*\*** Reversible Table Top, rectangular, 30" x 48", 1" thick, t-molding edges, melamine tops, black/mahogany



LAMINATE TABLE TOP  
Royal Industries  
Model ROY RTT 2424 T (#960087)

\$40.00 ea

**\*\*USED\*\*** Table Top, square, 24" x 24", 1" thick, t-molding edges, melamine tops, walnut, with dining height table base included **\*\*7EA AVAILABLE\*\***

